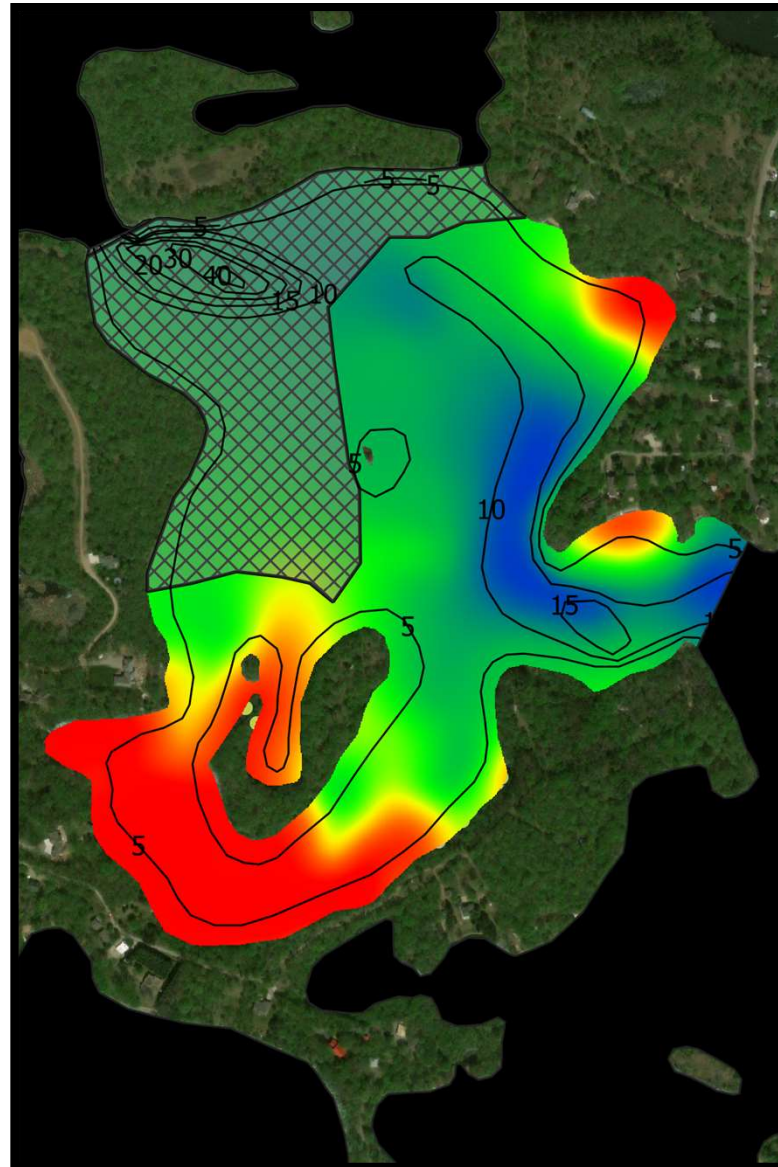


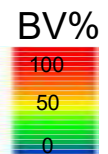
**Krays Lake**

Curlyleaf Pondweed  
Meandering Delineation  
Survey Date: 5/7/2020



*Plant volume is not species specific (i.e., it includes more than curlyleaf pondweed). Hatched areas show where sonar data were too poor to generate an estimate or where surveys did not occur.*

*Plant biovolume by sonar and Biobase SAAS. Plant biovolume is the percentage of aquatic plants occupying the water column at a given point. Values of 0 (Blue) indicate no plants and 1 (Red) indicate plants at the surface of the water.*



**Krays Lake**

Curlyleaf Pondweed  
Meandering Delineation  
Survey Date: 5/7/2020

*Krays Lake  
(73008700) delineated  
treatment area is 20.9  
of 82 littoral acres  
(25%).*

*Select a maximum of  
12.3 acres (i.e., 15% of  
littoral zone) for  
proposed treatment.*

