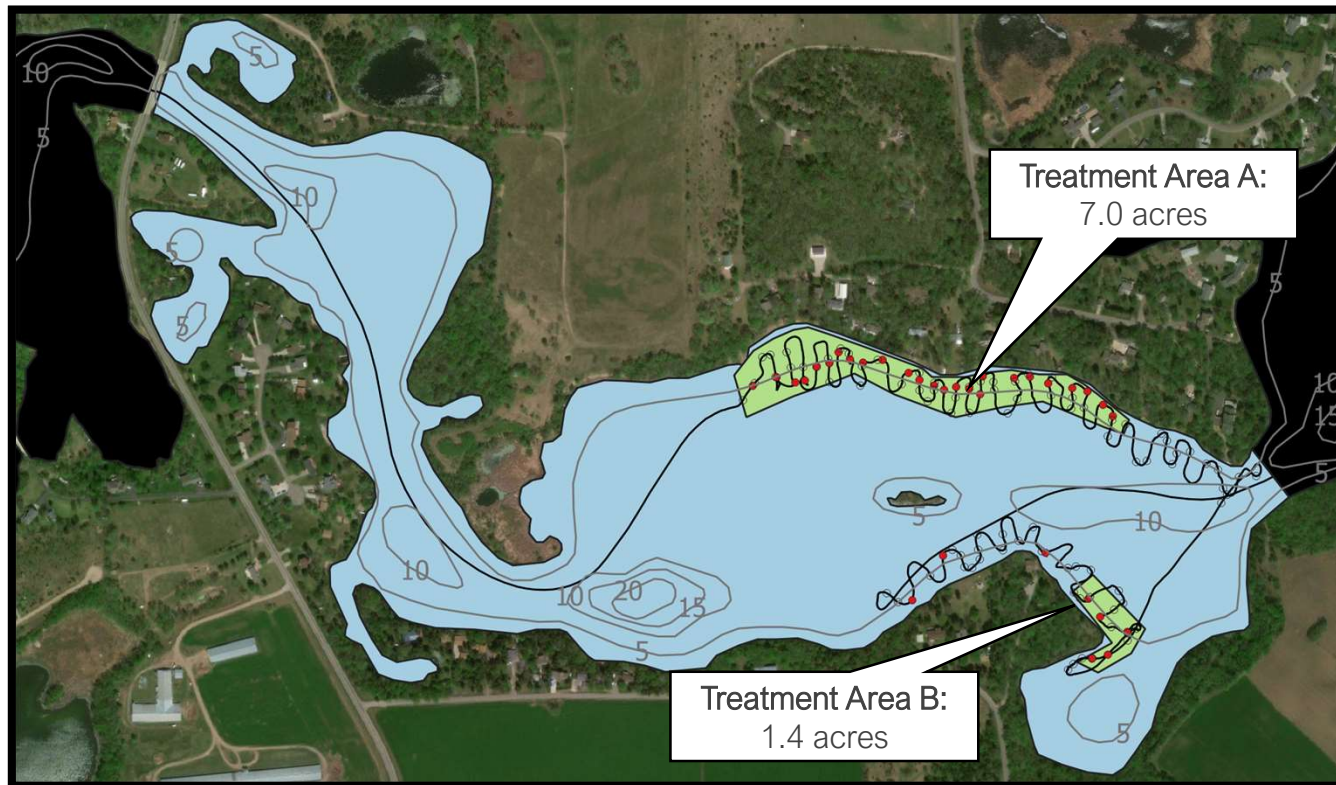
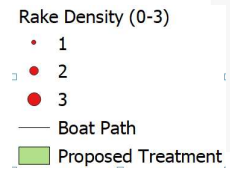


Plant biovolume by sonar and Biobase SAAS. Plant biovolume is the percentage of aquatic plants occupying the water column at a given point. Values of 0 (Blue) indicate no plants and 1 (Red) indicate plants at the surface of the water. Plant volume is not species specific (i.e., it includes more than curlyleaf pondweed). Hatched areas show where sonar data were too poor to generate an estimate or where surveys did not occur.

Zumwalde Lake
Curlyleaf Pondweed
Meandering Delineation
Survey Date: 4/30 - 5/8/2020



Zumwalde Lake (73008900) delineated treatment area is 8.4 of 105 littoral acres (27%). Select a maximum of 15.7 acres (i.e., 15% of littoral zone) for proposed treatment.