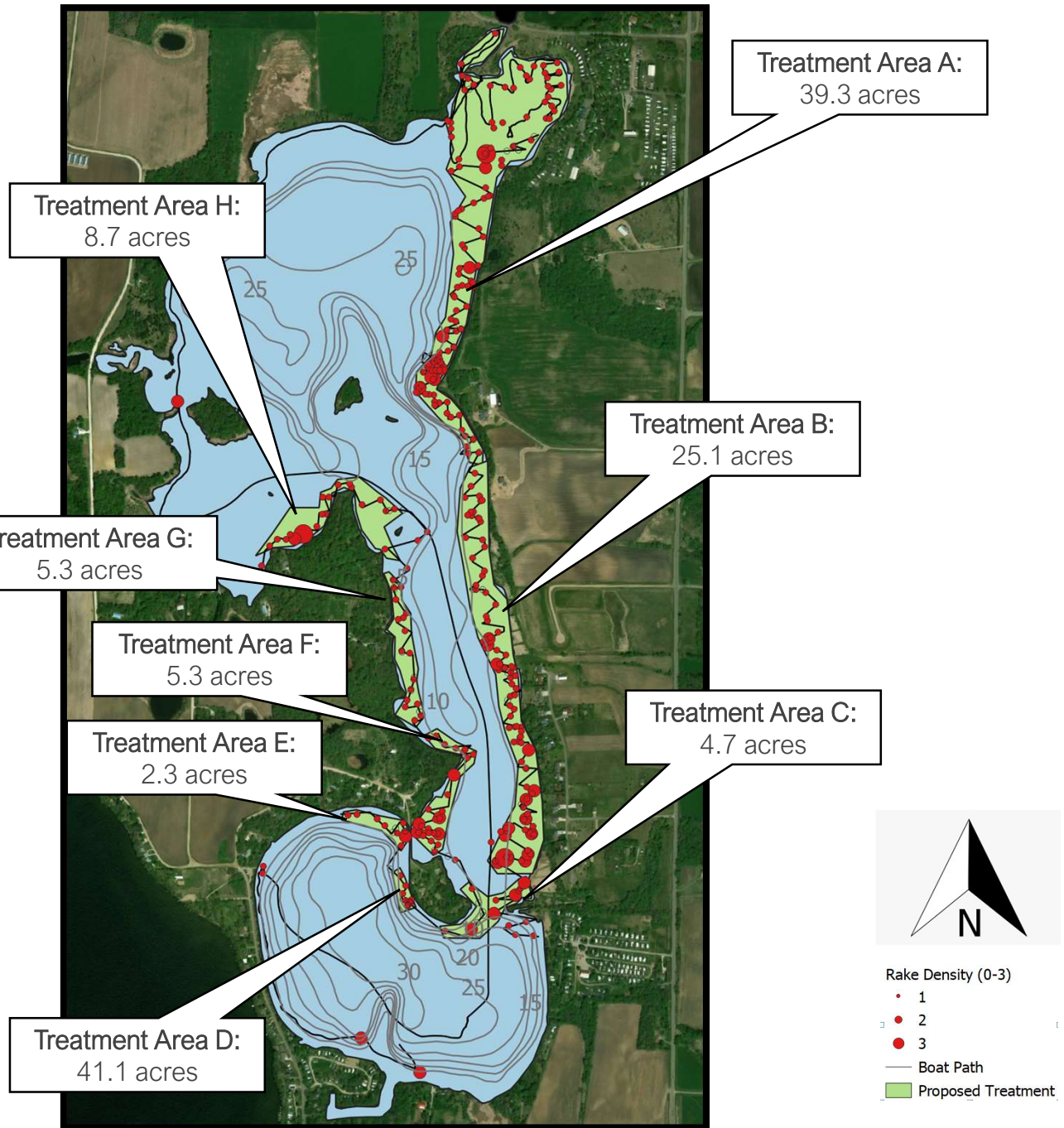


**Long Lake**  
Curlyleaf Pondweed  
Meandering Delineation  
Survey Date: 5/7/2020

*Long Lake (73013900)  
delineated treatment  
area is 92 of 309  
littoral acres (30%).*

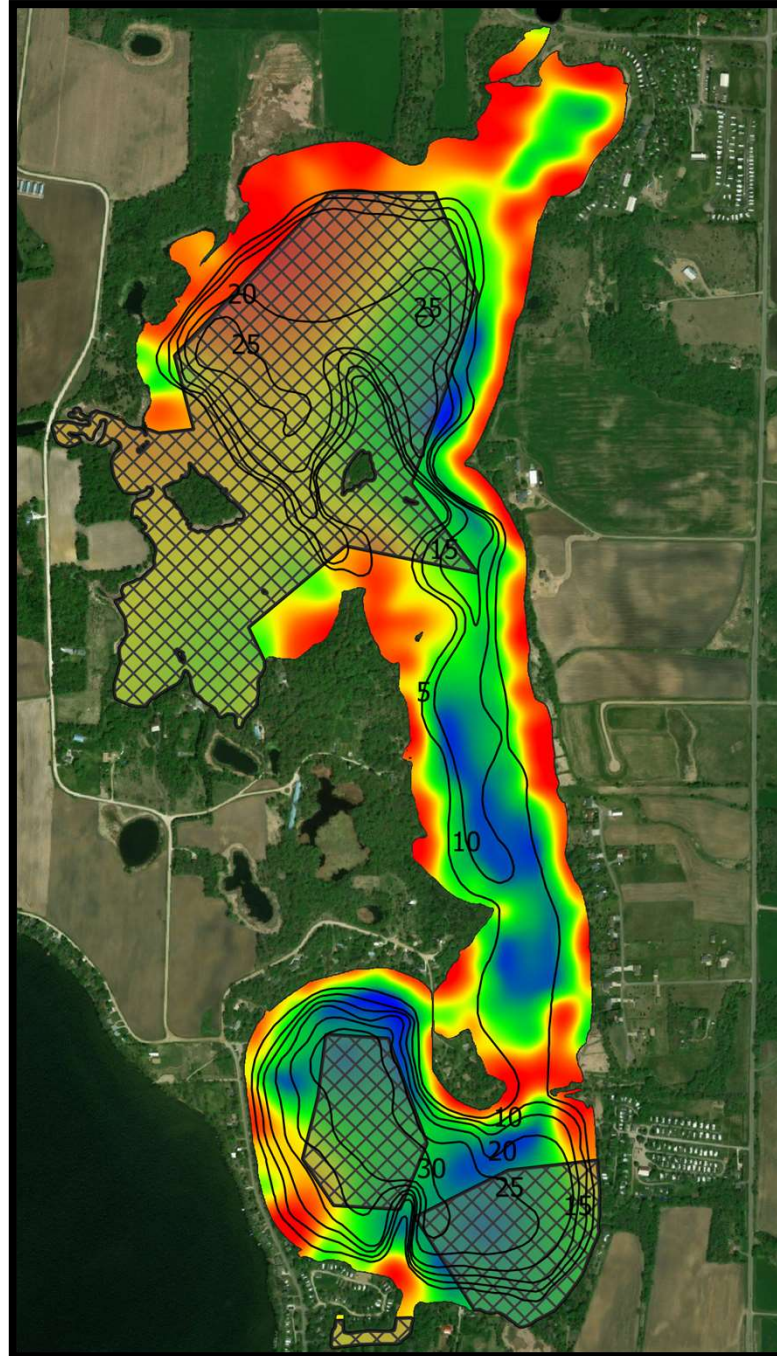
*Select a maximum of  
46 acres (i.e., 15% of  
littoral zone)  
for proposed treatment.*



**Long Lake**

Curlyleaf Pondweed  
Meandering Delineation  
Survey Date: 5/7/2020

*Plant biovolume by sonar and Biobase SAAS. Plant biovolume is the percentage of aquatic plants occupying the water column at a given point. Values of 0 (Blue) indicate no plants and 1 (Red) indicate plants at the surface of the water.*



*Plant volume is not species specific (i.e., it includes more than curlyleaf pondweed). Hatched areas show where sonar data were too poor to generate an estimate or where surveys did not occur.*

