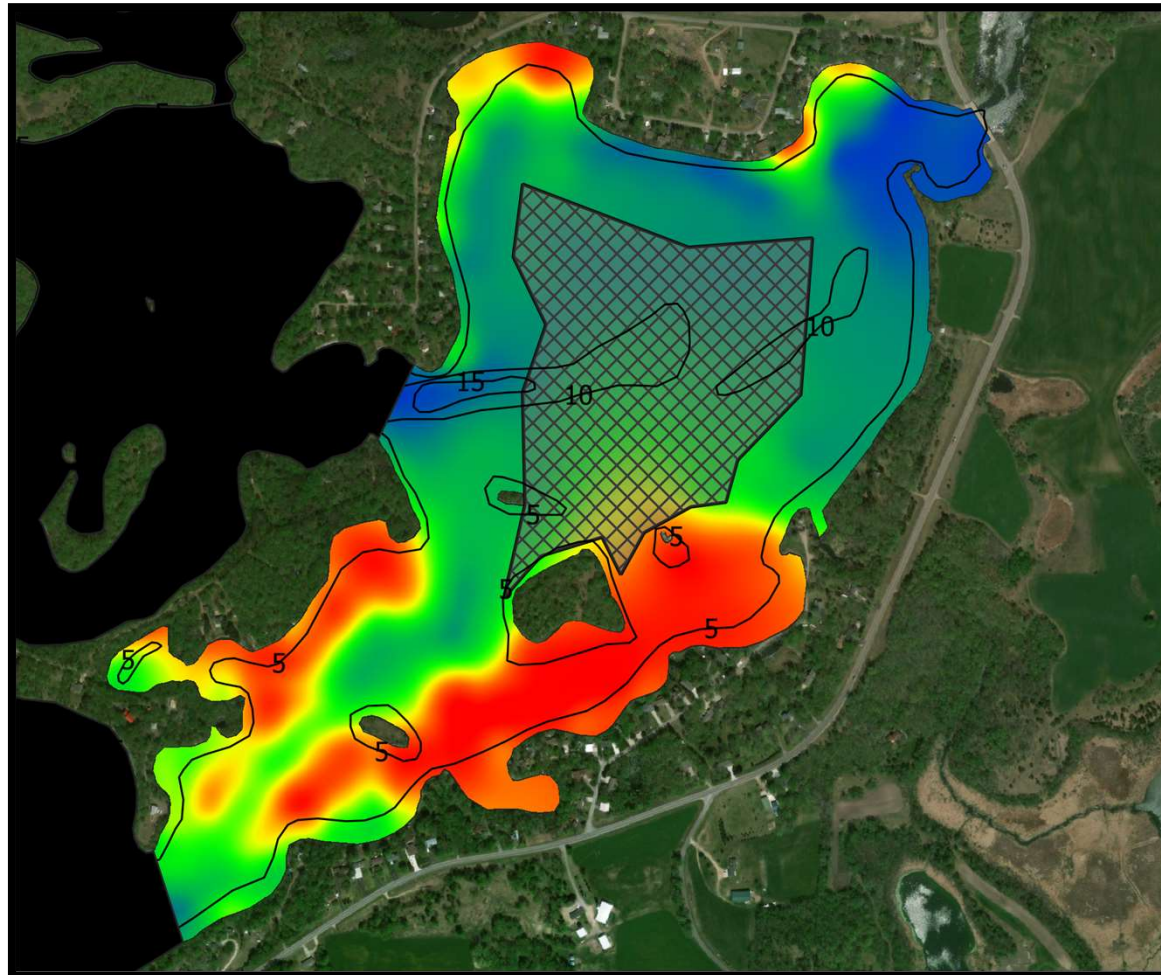
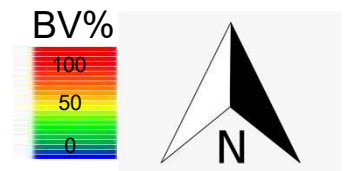
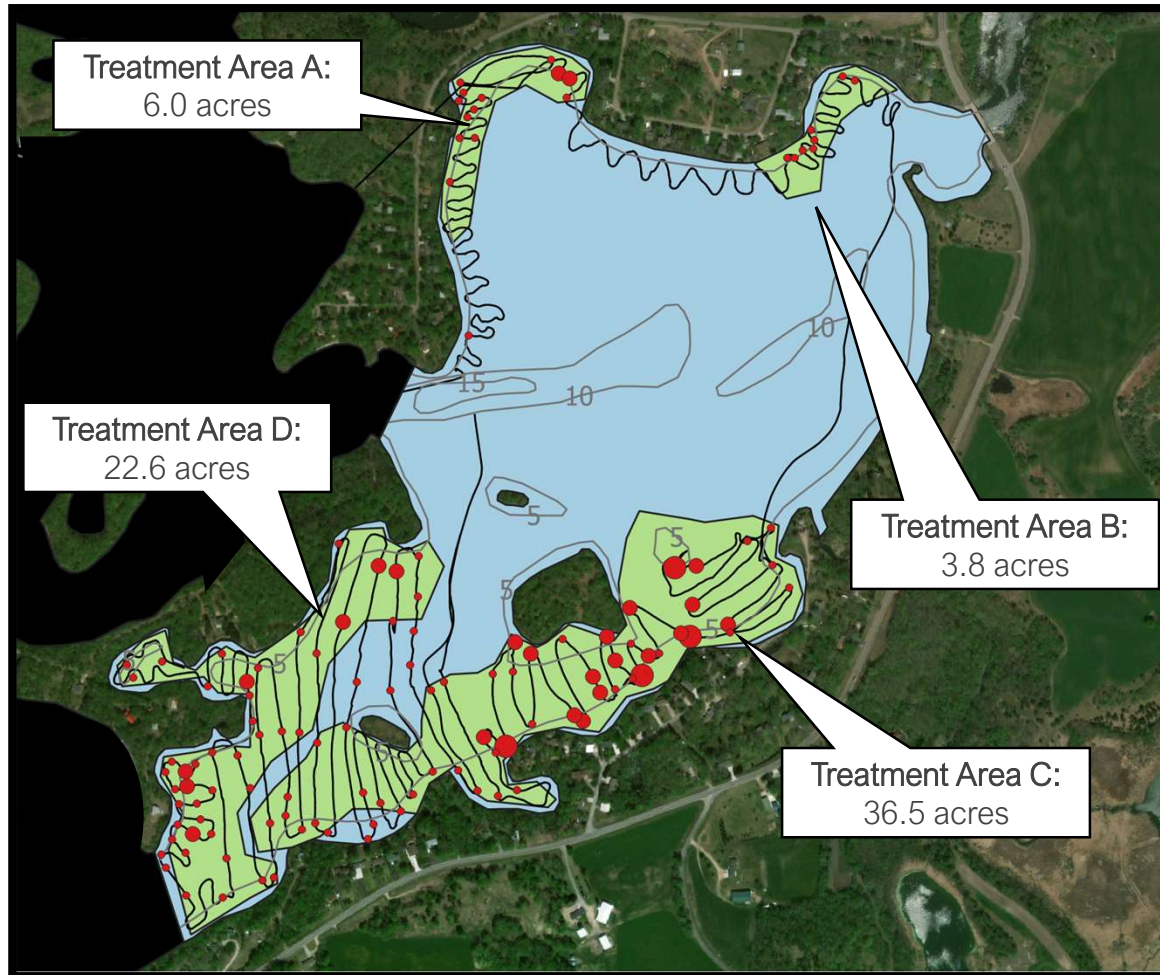
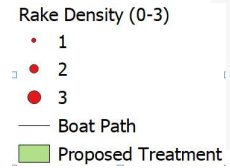


Knaus Lake
Curlyleaf Pondweed
Meandering Delineation
Survey Date: 4/30 - 5/8/2020



Plant biovolume by sonar and Biobase SAAS. Plant biovolume is the percentage of aquatic plants occupying the water column at a given point. Values of 0 (Blue) indicate no plants and 1 (Red) indicate plants at the surface of the water. Plant volume is not species specific (i.e., it includes more than curlyleaf pondweed). Hatched areas show where sonar data were too poor to generate an estimate or where surveys did not occur.

Knaus Lake
Curlyleaf Pondweed
Meandering Delineation
Survey Date: 4/30 - 5/8/2020



*Knaus (73008600) delineated treatment area is 68.9 of 202 littoral acres (34%).
Select a maximum of 30.3 acres (i.e., 15% of littoral zone) for proposed treatment.*